

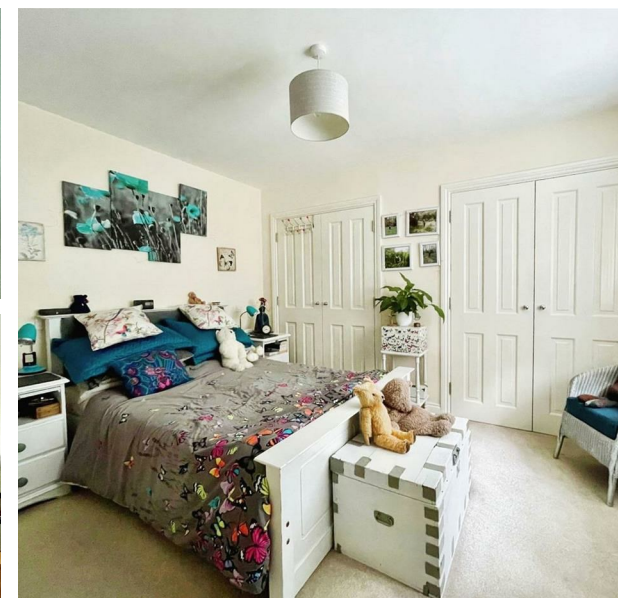
7 Glen Place, Cowes, PO31 8DZ

Asking Price £840,000

EPC Rating: B Council Tax Band: E

ELLIOTT
LINCOLN
ESTATE AGENTS & ASSOCIATES

Reassuringly familiar, refreshingly new



Nestled in the sought after Gurnard area of Cowes, this exceptional detached bungalow offers a rare opportunity to own a hidden sanctuary just minutes from the beach and local amenities. Situated on a generous 0.27-acre plot, this idyllic property feels like a private wildlife haven, surrounded by wildflowers, grasses, and fruit trees, attracting red squirrels and a variety of birds, some rare. An enchanting wrap-around garden with a countryside backdrop, a true escape from the everyday.

Office 4, Baring Chambers Denmark Road
Cowes
Isle of Wight
PO31 7SY
01983 642622
office@elliottlincoln.co.uk
www.elliottlincoln.co.uk



Floor Plan
Floor area 167.0 m² (1,798 sq.ft.)

TOTAL: 167.0 m² (1,798 sq.ft.)

This floor plan is for illustrative purposes only. It is not drawn to scale. Any measurements, floor areas (including any total floor area), openings and orientations are approximate. No details are guaranteed, they cannot be relied upon for any purpose and do not form any part of any agreement. No liability is taken for any error, omission or misstatement. A party must rely upon its own inspection(s). Powered by www.Propertybox.io

Energy Efficiency Rating		
	Current	Potential
Very energy efficient - lower running costs		
(92 plus) A		92
(81-91) B	84	
(69-80) C		
(55-68) D		
(39-54) E		
(21-38) F		
(1-20) G		
Not energy efficient - higher running costs		
England & Wales	EU Directive 2002/91/EC	